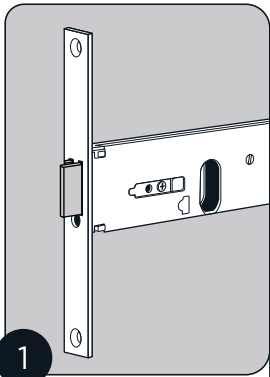
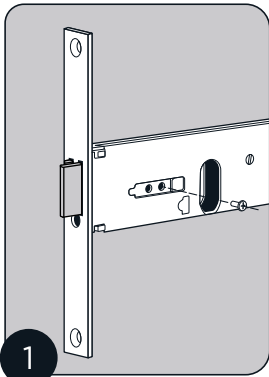


704 MID RAIL LOCK - HANDING REVERSAL



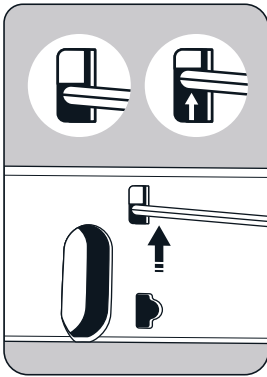
CHECK HANDING

Determine if handing direction is correct for the door installation. If reversal is needed follow these steps to reverse handing direction.



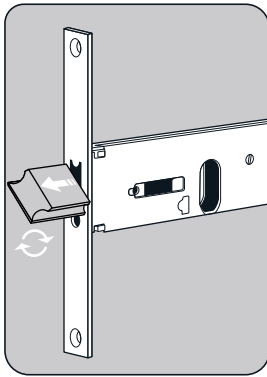
REMOVE SCREW

Remove the captive screw from the side of the main unit.



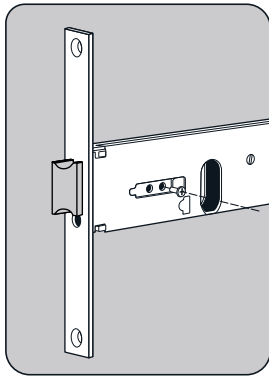
LATCH RETAINER

Rotate the assembly and using a thin screwdriver or allen key, raise the latch retainer up as far as it will go.



REPOSITION LATCH

With the latch retainer in the up position, pull the latch out and rotate 180 degrees to reverse the handing, push back into the body and release the latch retainer.

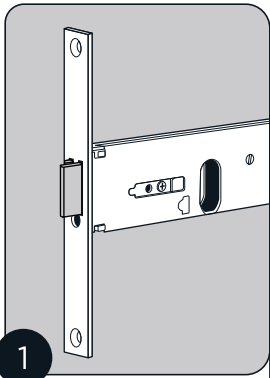


REPLACE SCREW

Replace the captive screw back into the side of the main unit

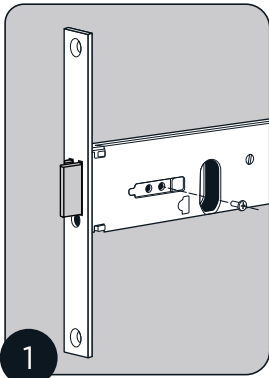
ISE0704001

704 MID RAIL LOCK - HANDING REVERSAL



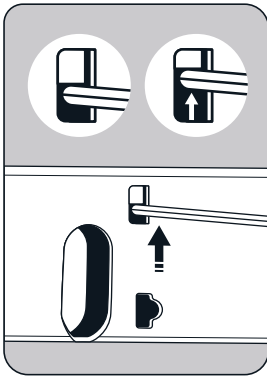
CHECK HANDING

Determine if handing direction is correct for the door installation. If reversal is needed follow these steps to reverse handing direction.



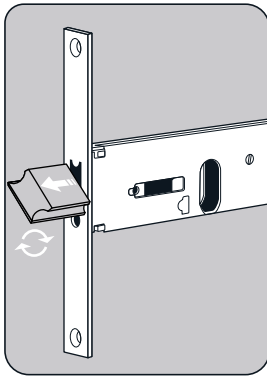
REMOVE SCREW

Remove the captive screw from the side of the main unit.



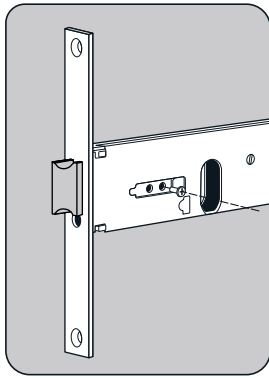
LATCH RETAINER

Rotate the assembly and using a thin screwdriver or allen key, raise the latch retainer up as far as it will go.



REPOSITION LATCH

With the latch retainer in the up position, pull the latch out and rotate 180 degrees to reverse the handing, push back into the body and release the latch retainer.

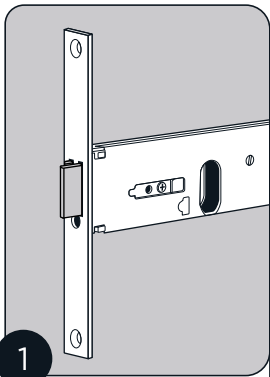


REPLACE SCREW

Replace the captive screw back into the side of the main unit

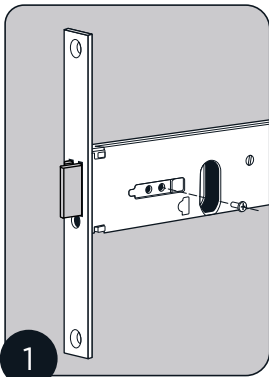
ISE0704001

704 MID RAIL LOCK - HANDING REVERSAL



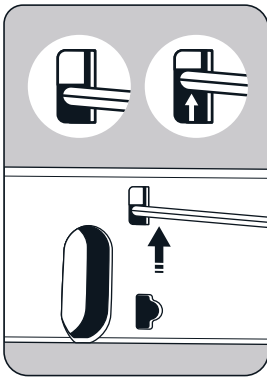
CHECK HANDING

Determine if handing direction is correct for the door installation. If reversal is needed follow these steps to reverse handing direction.



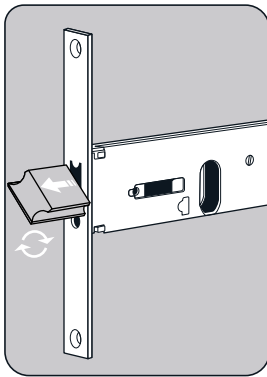
REMOVE SCREW

Remove the captive screw from the side of the main unit.



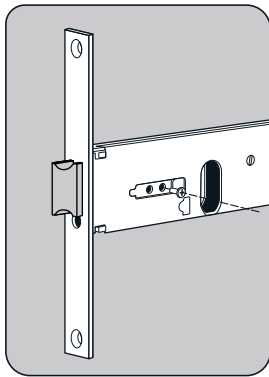
LATCH RETAINER

Rotate the assembly and using a thin screwdriver or allen key, raise the latch retainer up as far as it will go.



REPOSITION LATCH

With the latch retainer in the up position, pull the latch out and rotate 180 degrees to reverse the handing, push back into the body and release the latch retainer.



REPLACE SCREW

Replace the captive screw back into the side of the main unit

ISE0704001