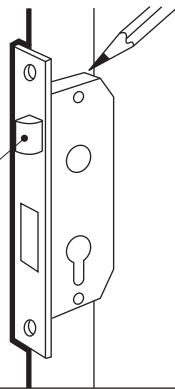


1 Use drilling template (see reverse) or hold the lock at the required position.

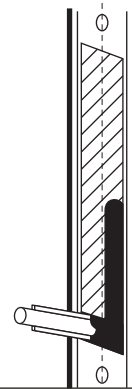
Draw horizontal lines on the door edge marking the top and bottom of the lock body.

Latch Bolt



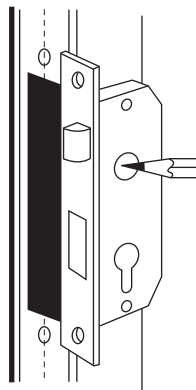
2 Mark a vertical line at the centre of the door edge between the two horizontal lines.

Using the attached drilling template and a router, cut out the shape of the lock body from the face of the door and predrill and tap the top and bottom mounting holes at $\varnothing 4\text{mm}$.

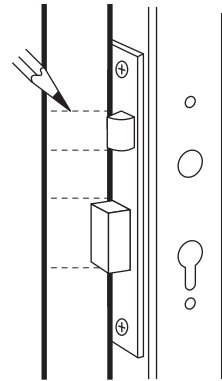


3 Use drilling template (see reverse) or hold the lock against the door and mark the positions for spindle and keyhole—depending on backset.

Prepare the hole. Fit the lock and cylinder and ensure that the bolt works correctly. Screw the lock into position.



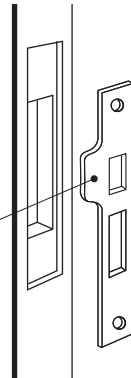
4 On the door frame, mark the top of the roller bolt or latchbolt and the bottom of the deadbolt.



5 Using these guidelines check out and fit the striker plate.

Ensure tongue of striker plate is around the correct way, depending on the handing of the door.

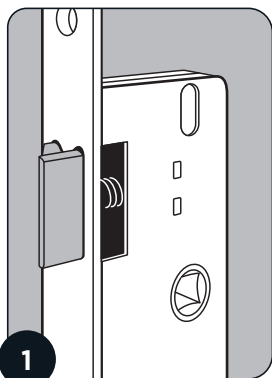
Tongue



6 FIT HANDLE.

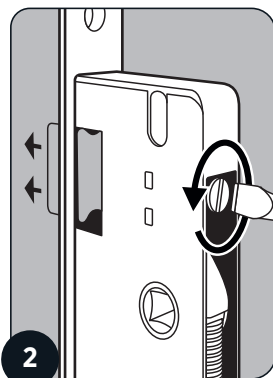
Fit handle as per manufacturer's instructions.

S735 MORTICE LOCK HANDING REVERSAL



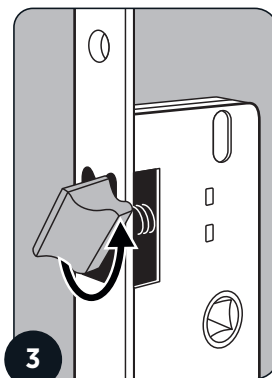
1 CHECK HANDING

Determine if handing direction is correct for the door installation. If reversal is needed follow these steps to reverse handing direction.



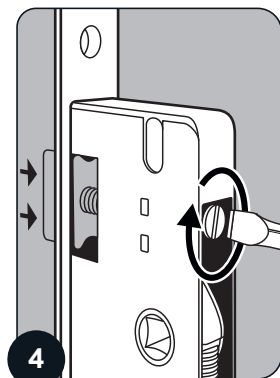
2 RELEASE LATCH

Loosen screw in the back of the lock body located in line with the latch, this will extend the latch past the lock face,



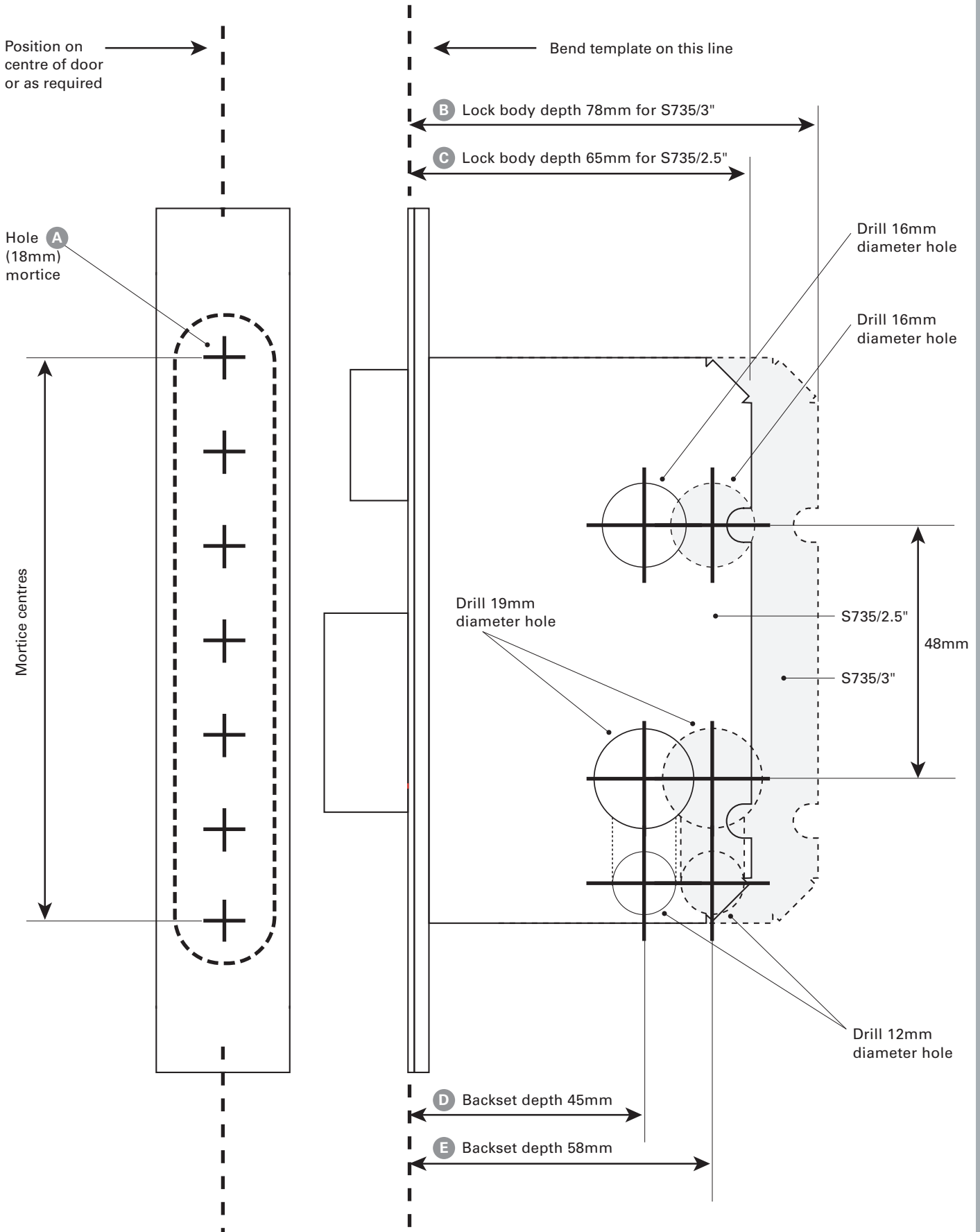
3 REVERSE LATCH

With the latch protruding past the lock face, turn the latch 180 degrees and reseat the latch into the lock face.



4 SECURE LATCH

Tighten screw in the back of the lock body this will pull the latch back into to the lock body securing the latch.



Note: If reprinting this template, ensure you print 1:1 ratio, and double check the drilling template with an accurate ruler.

