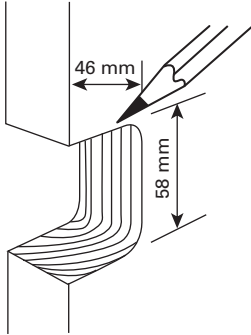


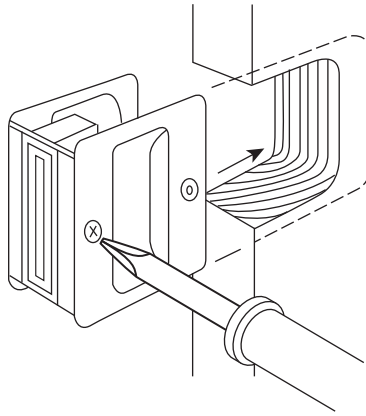
1 Mark and cut door.

Using the supplied template, mark the door pull/lock position on the door and cut out the detail.



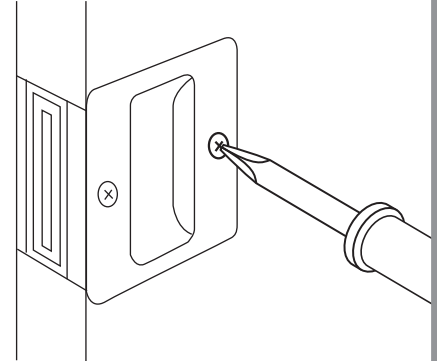
2 Position and adjust.

Position pull into the door by loosening the door thickness adjustment screws.



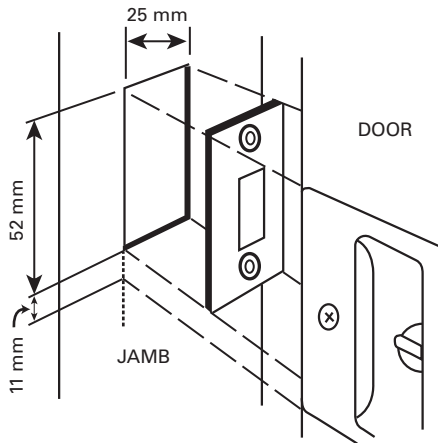
3 Fit door pull.

Fit sliding pull handle by tightening adjustment screws ensuring pull is central in the door. Fit the larger style wood screws as shown.



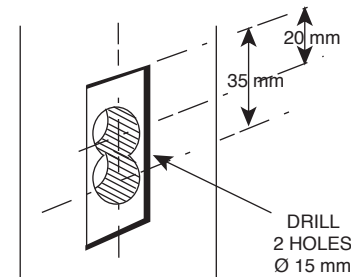
4 Align Striker Plate SDPBK Only

By closing the door, line up striker plate position on jamb, central to the lock. Mark and chisel out mortice for striker into the jamb.



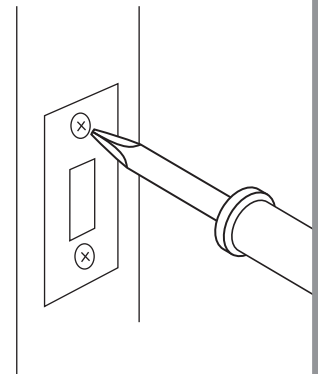
5 Drill and Position Striker Plate

Drill two 15 mm (9/16") diameter holes, 12 mm deep at 20 mm from top of plate to centre of hole and also 35 mm from the top of the plate to the centre of the hole. Chisel out holes to form a rectangular hole for clearance of locking arm.

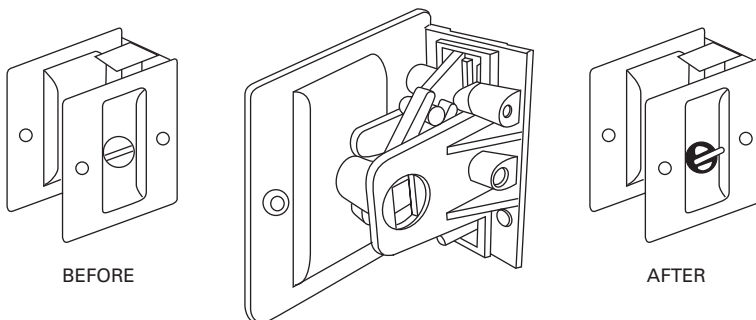


6 Mount Striker Plate

Fix striker plate into jamb with the two smaller wood screws provided.



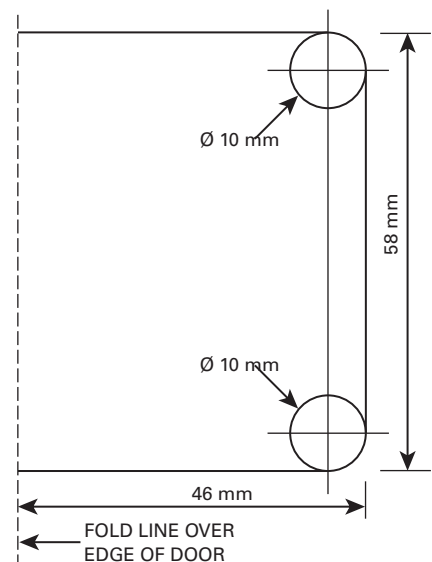
To change handing reverse outer plates (privacy lock only SDPBK)



Remove screws, swap plates around, and ensure drive unit is engaged into both slots.

Specifications subject to change without notice.

Reverse Handing



Installation Template